

Cedar — For The Best In Sauna Materials

CLEAR T&G CEDAR INTERIOR WALLS & CEILING

CEDAR DOOR (DELUXE PACKAGE)

DOOR HARDWARE

BENCH KIT (all 2 X 4's)

FLOOR KIT

HEATER GUARD

LIGHT FIXTURE

ALUMINUM FOIL (Vapour Barrier)

GALVANIZED FINISHING NAILS

SAVU SAUNA HEATER KIT

DESIGN AND CONSTRUCTION BOOKLETS

Sauna heat and moisture requires the best grade of cedar like "A & Better", NOT the lower grades of clear like "C & BTR" or "D & BTR". Costly scrap and unsightly butt joints are eliminated as we supply to your chosen lengths. Allowed room Height is 82", for regular horizontal application. Cedar lining of **WESTERN RED CEDAR** is available in 1/2" x 4" or 1" x 4"

A solid cedar door made of matching 2 X 4 T&G clear cedar which maintains full rigidity with the use of 3 internal-pressure drawbolts. Available with/without window. Door size 73" X 24 1/4" approx., for rough stud opening 76 1/4" X 26". (deluxe package sizes only.)

Large 4" hinges with 8 screws per hinge, two heavy-duty cedar door handles, and the special adjustable nylon sauna door catch.

Heavy-duty 2 X 4 construction for 2-tier benches on longest wall. Top bench 20" wide, bottom bench 17" wide. All bench 2 X 4's are guaranteed clear, kiln-dried with rounded corners. Complete with pre-cut cross-supports, and all screws for bottom-fastening.

Built of full 1" X 2 1/2" clear cedar on flexible sleepers, this strong material will contour itself to irregularities in your floor. Covers entire floor in front of benches.

Recommended for safety and made of the same full 1" X 2 1/2" clear cedar.

Your choice of the standard wall surface-mount, optional ceiling surface mount or deluxe ceiling recessed, they are all vapour-proof.

A roll of the special aluminum foil insulation is included. The large 500 sq. ft. roll is used for saunas larger than 5' X 7'

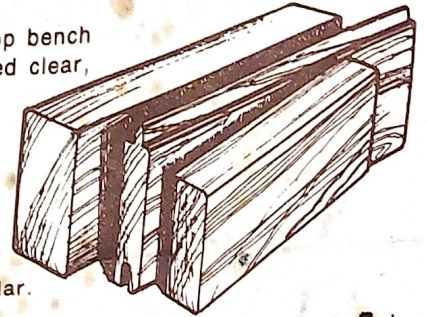
Electro-galvanized axdcox finishing nails are supplied as a job lot in 4 sizes, enough for all purposes.

Our commercial-duty heaters of aluminum and stainless steel construction are complete with:

1. Variable temperature thermostat (5° to 120° C)
2. 55 lbs igneous sauna rocks in deluxe heater.
3. Special mounting bracket for installing the heat sensor inside the sauna.
4. NOTE: asbestos wall plates ARE NOT REQUIRED.

Two comprehensive reference booklets in sauna design and construction are now available with every SAVU SAUNA heater. Originally written for architects, designers and contractors, these guides have become very useful for the do-it-yourselfer, too.

Our plans can eliminate guesswork and costly mistakes, especially at the design stage. Use our knowledge and experience to plan your sauna and build it right!



6 KW DELUXE HEATER

POPULAR SIZES	HEATER SIZE	NO. OF BENCHES
4 x 5	4 KW	1
4 x 6	4 KW	1
4 x 7	6 KW	1
5 x 5	4 KW	2
5 x 6	6 KW	2
5 x 7	6 KW	2
5 x 8	6 KW	2
6 x 6	6 KW	2
6 x 7	6 KW	2
6 x 8	6 KW	2
7 x 9	9 KW	4
7 x 10	9 KW	4

STANDARD CEDAR PACKAGE INCLUDES:

1/2" x 4" T&G clear cedar in required lengths (actual 7/16" thick)
24" x 80" mahogany slab door with inside cedar lining kit.
Window not available.
Smaller wall heater in 4 KW and 5 KW sizes.

DELUXE CEDAR PACKAGE INCLUDES:

1" x 4" T&G clear cedar in required lengths (actual 3/4" thick).
Solid cedar door as described above.
Solid cedar door is ready to go.
The 1" x 4" T&G boards are 70% thicker, stronger, easier to work with, & provide greater insulative value.

CEDAR TRIM PACKAGE (optional)

OPTIONAL CEDAR TRIM PACKAGE

As the trim requirements for a sauna are so variable, a separate trim package is available: cedar door frame with sill, frame casing set, door stop set, and all inside corner trim mouldings.

MATERIALS NOT INCLUDED

These materials should be obtained locally: 2 X 4 framing, 1 X 2 strapping, R10 fiberglass insulation, framing nails, exterior panelling to suit, wiring from service panel.

STANDARD PACKAGE OR CUSTOM

A complete sauna material package will be assembled to our standard layout, or to your custom plans. Modifications in the package are allowed to suit your customized requirements.

All cedar materials are completely kiln-dried and stored in a controlled climate warehouse.

- () Please send me additional information on the prefabricated cedar SAVU SAUNA.
- () Send me complete information on your cedar Do-It-Yourself sauna material kit.
- () I am interested in the whirlpool baths.
- () Please have representative call. Inquiries are directed to local dealers wherever possible.



NAME _____

ADDRESS _____

CITY _____ PROV. _____

PHONE NO. _____ POSTAL CODE _____

Why Cedar?

Among the softer of the softwoods, British Columbia's **Western Red Cedar** remains stable even in the heat and humid conditions of the sauna. Being porous, it is an excellent insulator. Being 26% less dense, cedar does not become hot like pine or hemlock.

Cedar is more suitable for saunas than redwood as redwood turns a dirty grey from perspiration stains.

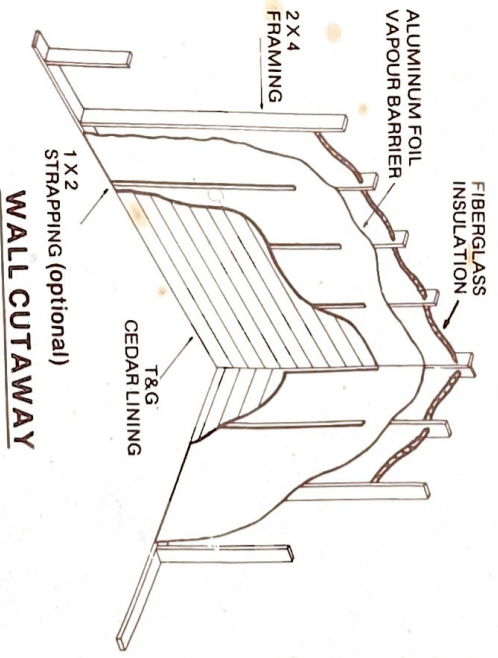
Other more brittle woods like redwood or hemlock tend to silver under sauna conditions. Cedar has no hot pitch to bleed on you. Cedar is also completely resistant to rot, decay and mold. A great wood to see and touch, with its well-liked cedar aroma.

ROUGH-IN INSTRUCTIONS

1. No floor drain is needed.
2. No outside venting is needed.
3. No inside water line is needed.
4. Roughed-in sauna should be framed for modular sizing. A 5 x 7 would be framed a maximum of 60" x 84", inside stud-to-stud. Height allowance is for 82". The door can be located anywhere.
5. Sizes to the half foot are permitted. A 5½ x 6½ is priced as a 5 x 7 and supplied lengths would be 5½' x 6½', wherever possible.
6. The T&G cedar is intended for horizontal wall application, directly to the studs.
7. Electrical wiring for the heater, controls and light can be installed upon delivery of your SAVU SAUNA Material Package.
8. Complete plans are available for SAVU SAUNA customers.

Business Reply Mail
 Necessary if mailed in Canada
 Postage will be paid by

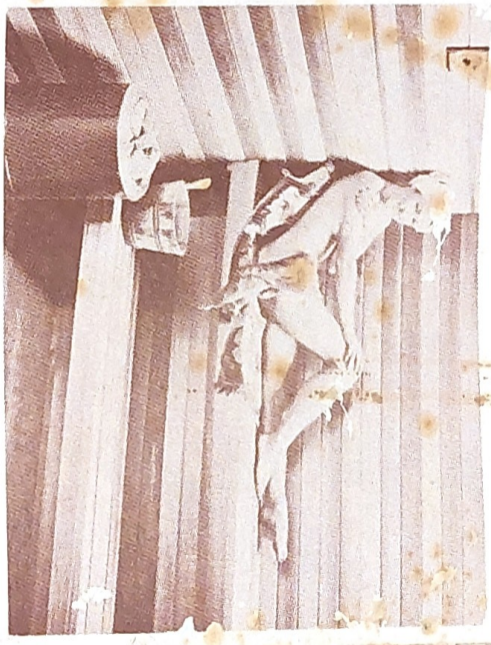
SAVU SAUNA PRODUCTS LTD.
 132 University Ave. E.,
 Waterloo, Ontario
 N2J 2W3



BEFORE YOU START YOUR QUESTIONS... ANSWER THESE QUESTIONS.

- YES NO 1. Do you have the carpentry knowledge required?
- YES NO 2. Will you effectively consider all design factors?
- YES NO 3. Do you have the time? (40 to 75 construction hours).
- YES NO 4. Will you finish what you start?

If the answer to any of these is NO, then do it the easy way, with the **QUALITY PRE-BUILT SAVU SAUNA**.



the pre-built SAVU SAUNA

Fast, easy installation in just several hours without messy construction. Easily dismantled should you move and want to take it with you.

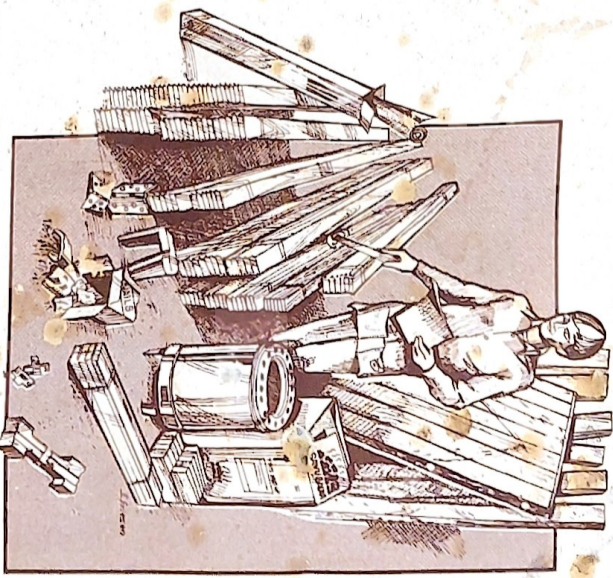
EITHER WAY — YOUR HOME SAUNA WILL BE —

The enjoyable solution for better health and physical conditioning for the entire family.



Head Office and Plant:
SAVU SAUNA PRODUCTS LTD.
 132 UNIVERSITY AVENUE E.
 WATERLOO, ONT. N2J 2W3
 (519) 885-1711

Build - Your - Own Sauna Cedar Material Package



FOR THE DO-IT-YOURSELF OR CONTRACTOR

From the people that put **QUALITY** into pre-built saunas, comes a new complete sauna material package to enable you to design & build-your-own sauna.

Using the same quality material as in the famous **"SAVU SAUNA"** pre-built sauna rooms, you too can now build your own sauna. With our step-by-step construction plans, and our comprehensive Guide to Sauna Design, your sauna can be built quickly and easily.

And best of all, our experience from building thousands of saunas and our expertise and advice are available to you direct from the factory or from our local dealer.